

BARELAND STRATA PLAN OF LOT A, DL 137, ODYD, PLAN EPP142499.

PLAN EPS11162

SHEET 1 OF 1

CITY OF KELOWNA
BCGS 82E.083
SCALE 1:300 METRIC



The intended plot size of this plan is 560mm in width by 432mm in height (C-size) when plotted at a scale of 1:300 METRIC.

LEGEND

- ⊕ Denotes Control Monument Found
- Denotes Standard Iron Post Found
- Denotes Lead Plug Found
- WI Denotes Witness

This plan shows one or more witness posts which are not set on the true corner(s).

Distances shown are horizontal, ground-level distances, in metres and decimals thereof.

Integrated Survey Area No. 4, City of Kelowna, NAD83(CSRS) 4.0.0.BC.1.

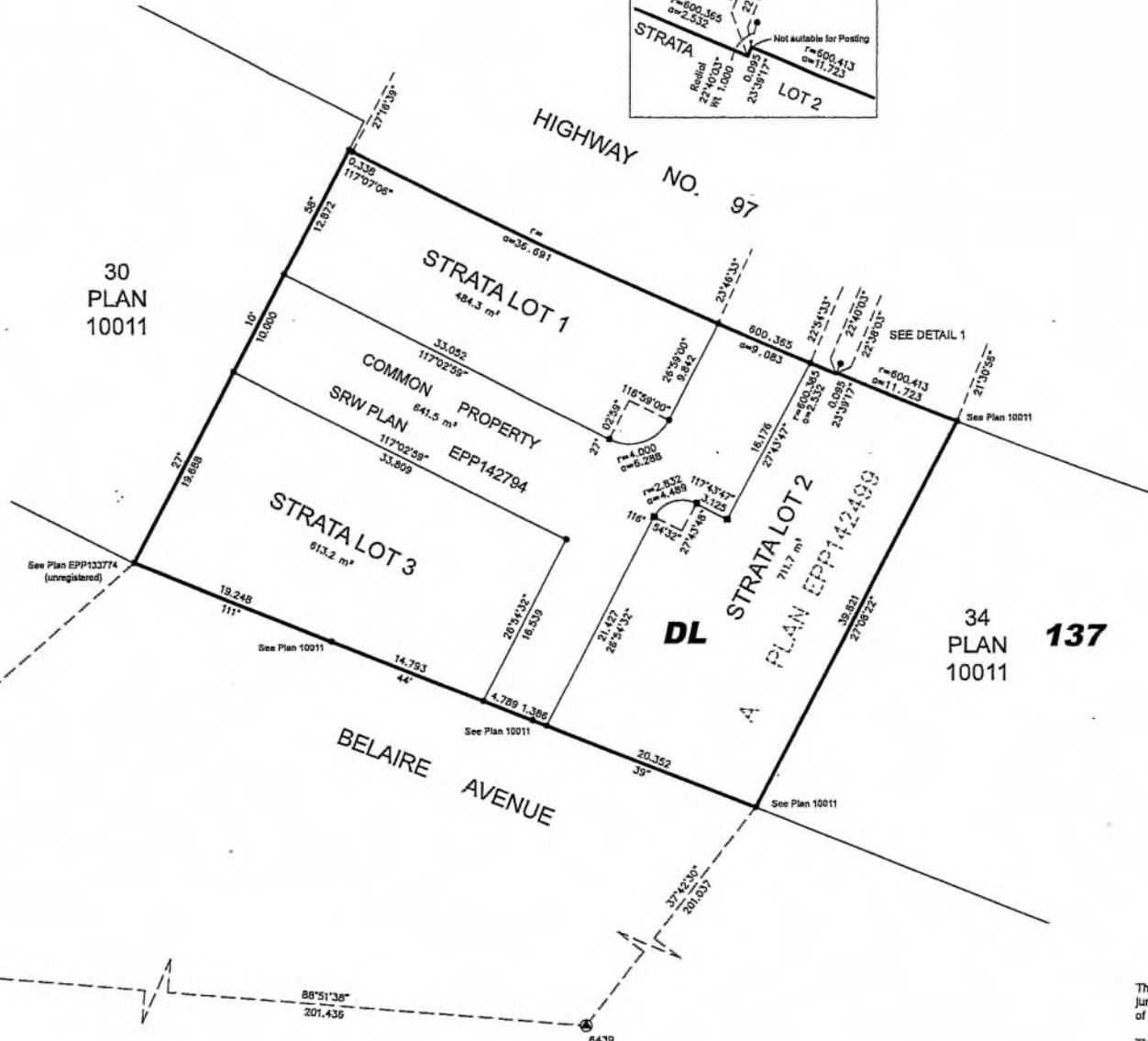
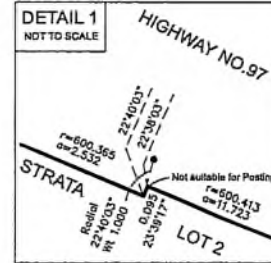
Grid bearings are derived from GNSS ties to geodetic control monuments 78H8244 and 6439 and are referred to the central meridian of UTM Zone 11.

The UTM coordinates and estimated absolute accuracy achieved are derived from the MASCO published coordinates and standard deviations for geodetic control monuments 78H8244 and 6439.

This plan shows horizontal ground-level distances unless otherwise specified. To compute grid distances, multiply ground-level distances by the average combined factor of 0.9999345 which has been derived from geodetic control monument 6439.

Civic Address:
1330-1352 Belaire Ave
Kelowna, BC

NAD83(CSRS) 4.0.0.BC.1 UTM ZONE 11 COORDINATES			
Point	Northing	Easting	Absolute Accuracy
6439	5528243.878	322448.713	0.02
78H8244	5528239.873	322248.330	0.02



34
PLAN
137
10011

This bare land strata plan lies within the Jurisdiction of the Approving Officer for the City of Kelowna.

This plan lies within the Regional District of Central Okanagan.

The field survey represented by this plan was completed on the 12th day of December, 2024.

Jesse Costar, BCLS #1061

DA Goddard Surveys
1315 St. Paul Street, Kelowna BC
File: 422089-ST

